

# KC868-H4w Device User Manual (V0612)

I . Software Downloading .....	Page 1
II . Device Wi-Fi Config Operation .....	Page1
III. Remote Controlling Operation .....	Page3
1. Mobile APP controlling manual .....	Page 3
2. Computer Program controlling manual (WAN mode).....	Page 7
IV. Local Controlling Operation (LAN mode) .....	Page8
1. Configuration Setting .....	Page 8
2. Computer Program Setting .....	Page 9

※Important: The “Remote Controlling” and the “Local Controlling” are alternative;  
You must choose one of them for using.

## I . Software Downloading

1. Use mobile phone to scan the below QR code to download the APP



2. KC868-H4w software (Phone APP QR code, PC Program, Vircom Network Tool) downloading link:  
[www.kincony.com/download/Disk\\_KC868-H4W.rar](http://www.kincony.com/download/Disk_KC868-H4W.rar)

Please download the file to have the software firstly, as below, it is default you already have and know them.

## II . Device Wi-Fi Config Operation (Necessary before any other controlling)

1. Your router must have the “DHCP” function and which is opened
2. One computer with Wireless function is necessary
3. Power on the device and install the antenna
4. Set the config of Wi-Fi as below steps:
  - 4.1: Use your computer to connect the wireless network of “ZLAN”
  - 4.2: Open the program of “Vircom Network tool”
  - 4.3: Click 【Device】

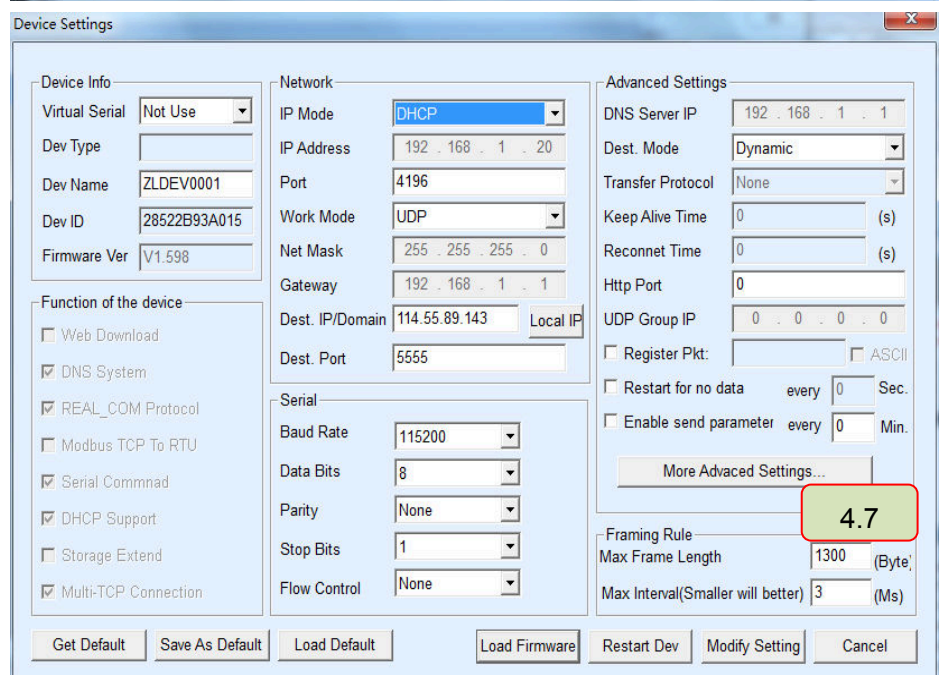
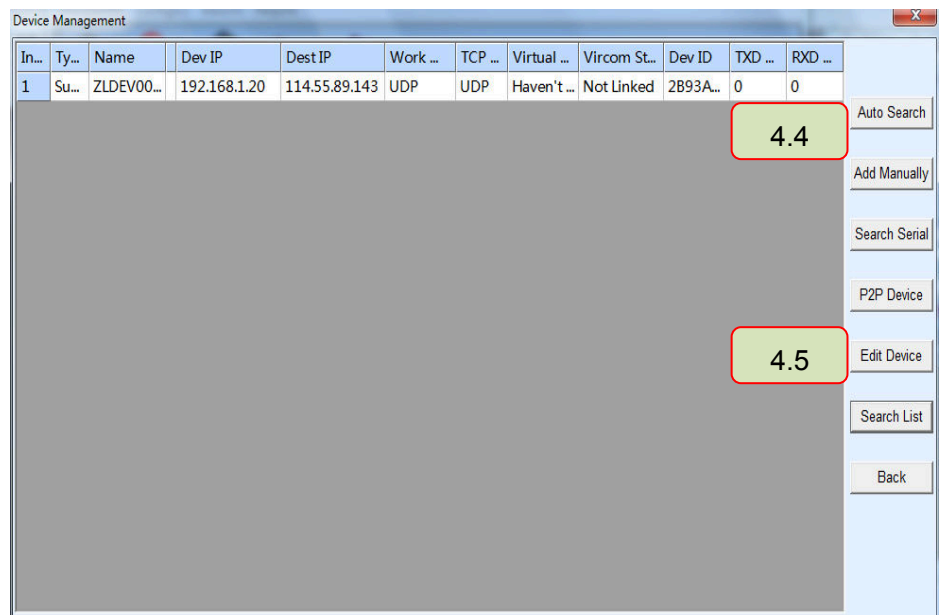
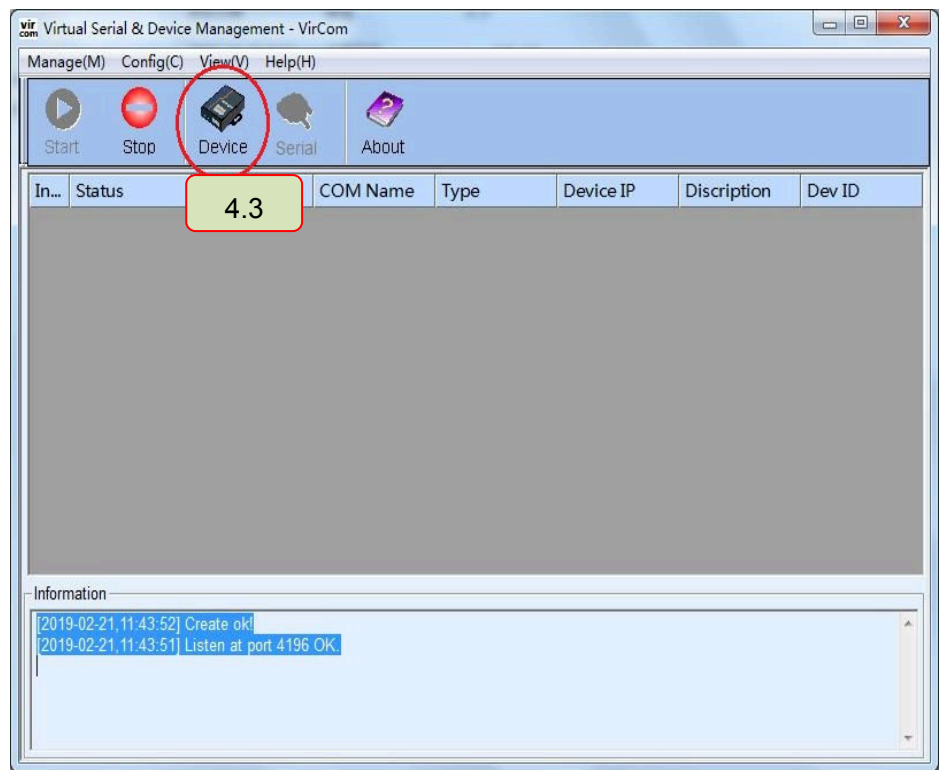


4.4: Click 【Auto Search】

4.5: Click 【Edit Device】

4.6: Enter into the page of  
【Device Settings】

4.7: Click  
【More advanced settings】



- 4.8: Choose “Station” for  
**【WIFI Work Mode】**  
 Input your router’s name for  
**【AP/STA SSID】**  
 Input your password for  
**【AP/STA Key】**

4.9: Click **【OK】**

- 4.10: Choose “DHCP” for  
**【IP Mode】**  
 Choose “UDP” for  
**【Work Mode】**
- 4.11: Keep others unchanging
- 4.12: Click **【Modify Setting】**
- 4.13: Re-power for the device
- 4.14: Wait for one minute  
 The device be online

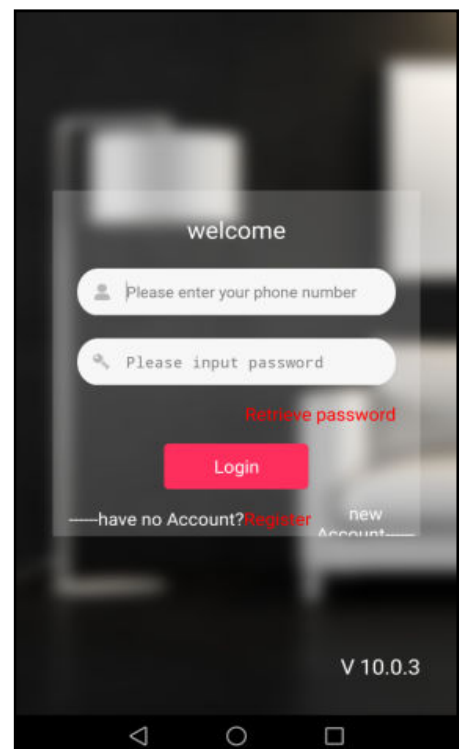
### III. Remote Controlling Operation

#### 1. Mobile APP controlling manual

##### 1.1 Power on the device and connect the internet cable

##### 1.2 Register

Downloading and installing the APP,  
 Register your account (11 digitals) and password,  
 (Pls make a note for your password in case forgotten).



### 1.3 Adding device

#### 1.3.1: Login in

Choose **【Mine】** - **【My Room】**

Add Floor and Room

(Be necessary! Make sure this step)

#### 1.3.2: Floor and Room can be re-named;

Click **【OK】**

#### 1.3.3: Choose **【Mine】** - **【Host Manager】**

#### 1.3.4: Click **【add】**

Scan the QR code on the device

Input a name for the device.

Click **【Add】**.

#### 1.3.5: Click **【Mine】** - **【My Device】**

- **【Unclassified】**

Hold pressing the ICON

Choose one room for the device

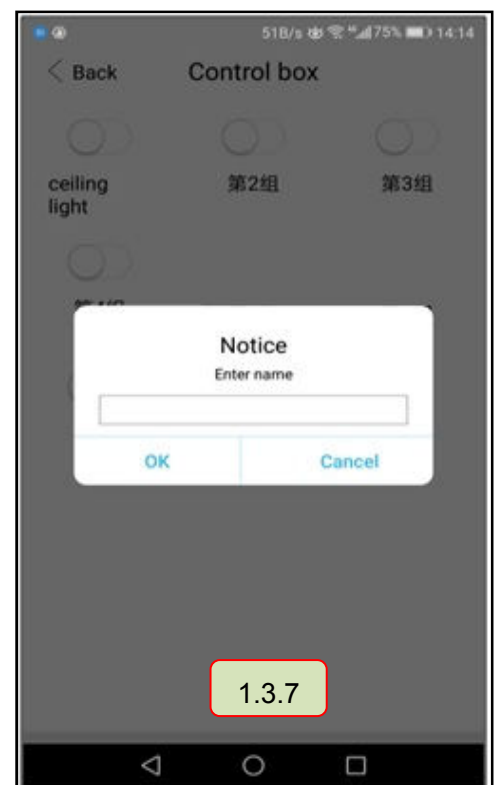
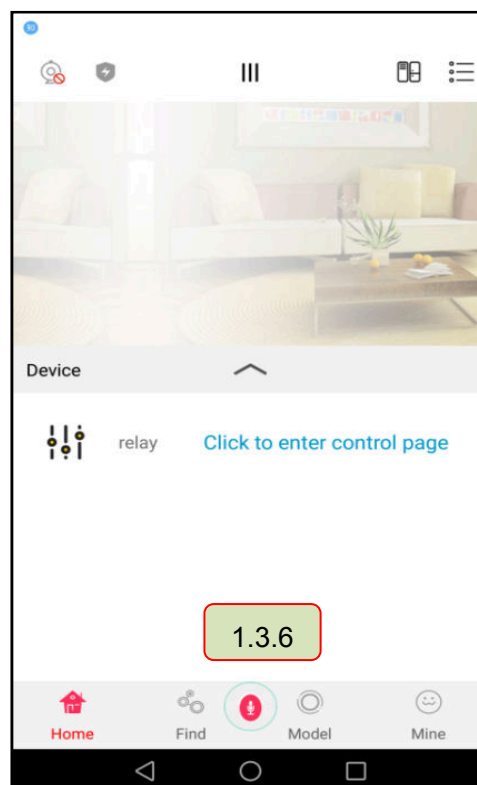
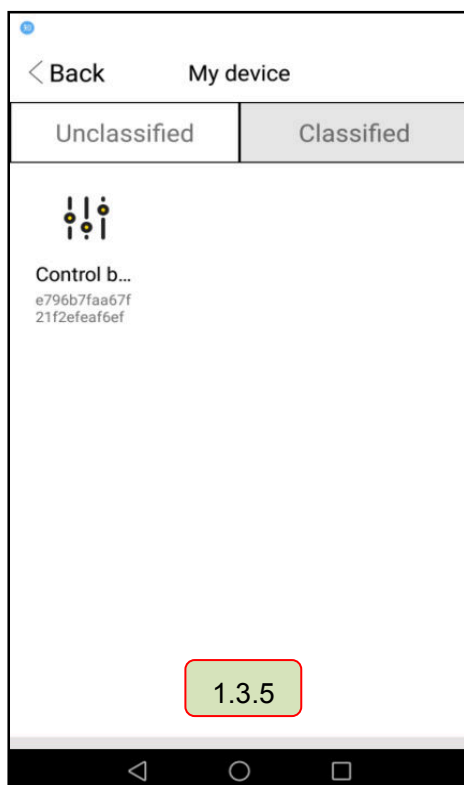
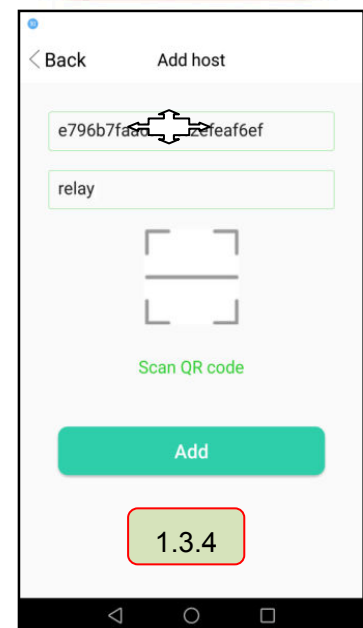
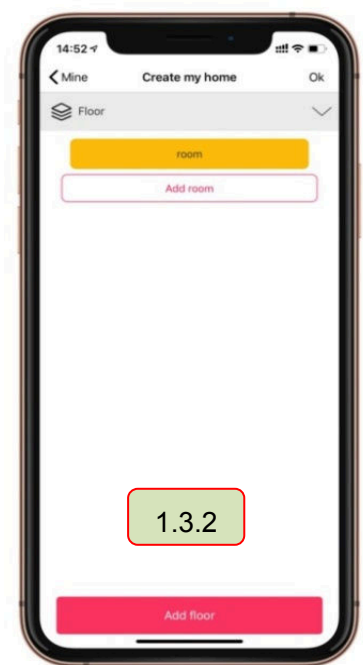
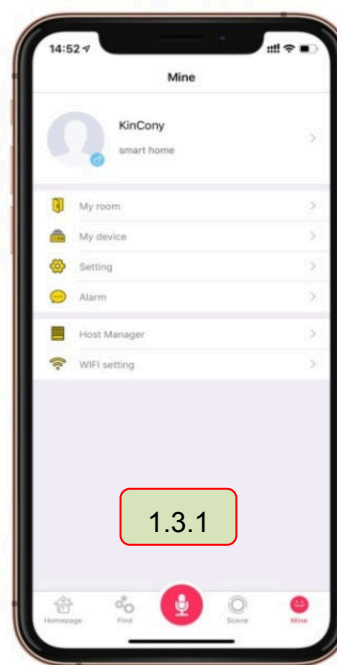
Input a name

#### 1.3.6: Click to enter control page

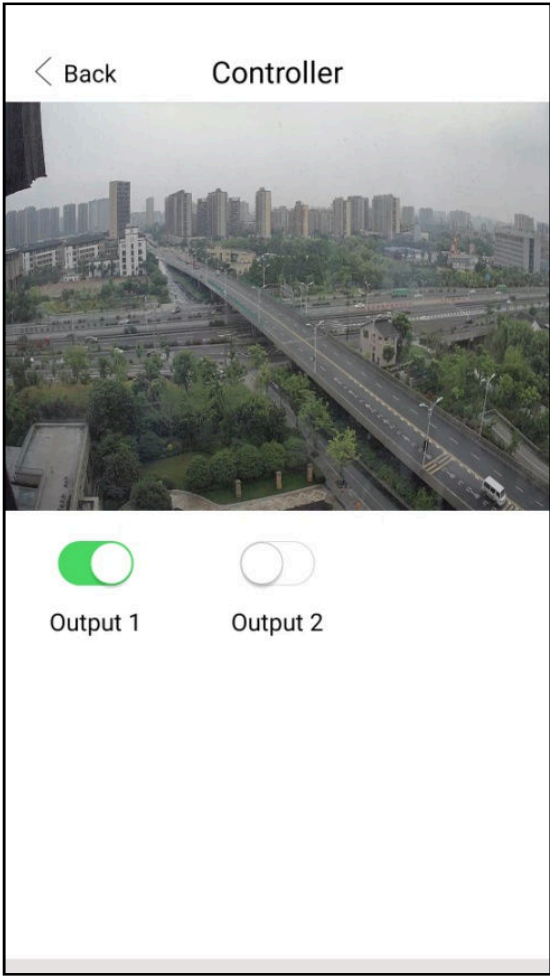
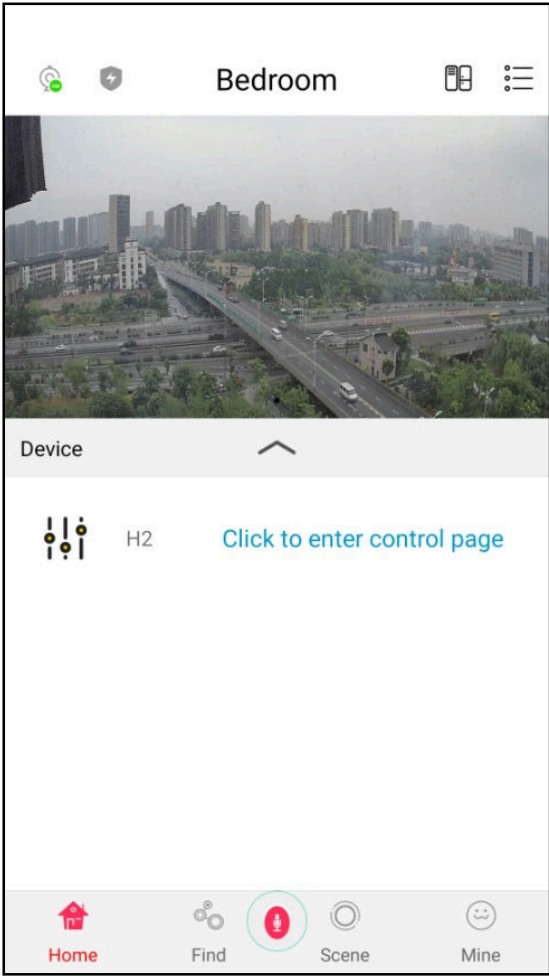
#### 1.3.7: Hold pressing the name of the relay

Input new name

#### 1.3.8: Click **【OK】**

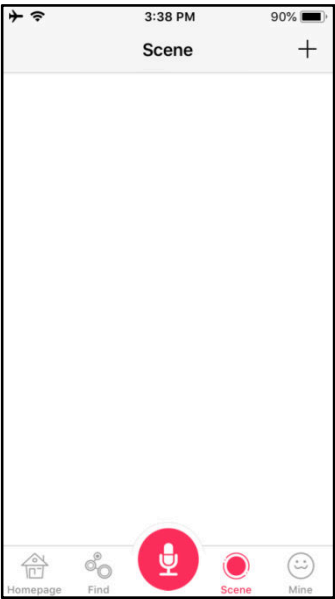


1.4 When there is the camera, open it at the home page.  
Then it can be showed when entering into the control page.



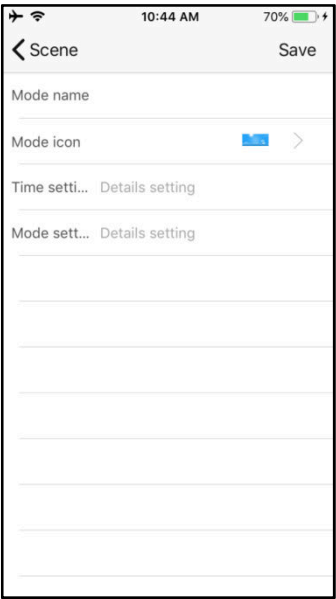
1.5 Scene linkage operation  
1.5.1 Create Scene Mode

Login in APP, Click 【Scene】 — 【+】 or 【Add】 --Input Mode name, choose Mode icon, Time setting Optional(Function of timing), at 【Mode setting】 , input the actions you want to control, click 【Save】 ; See below pic1.5-1, pic1.5-2, pic1.5-, pic1.5-4。



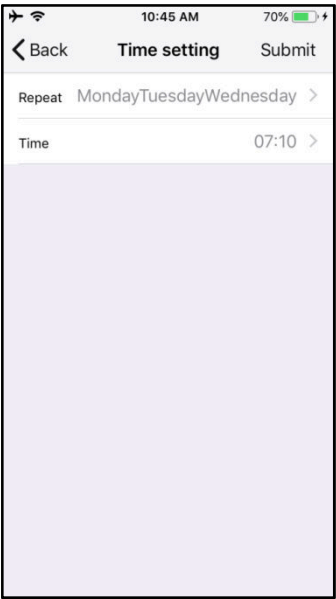
Pic1.5-1

Add Scene



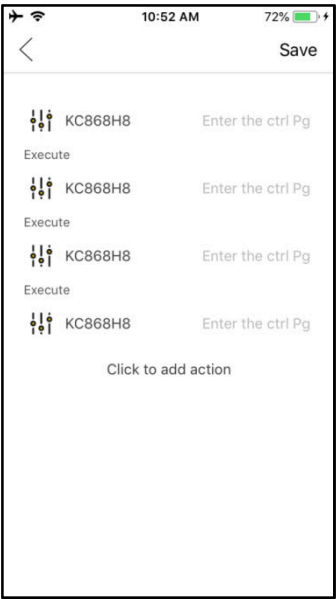
Pic1.5-2

Add Scene 2



Pic1.5-3

Time setting (Optional)



Pic1.5-4

Mode setting (Action controlled)



“Mode name” can be named; e.g.: Back Home, Leaving Home, Meeting;

“Mode icon” can be changed;

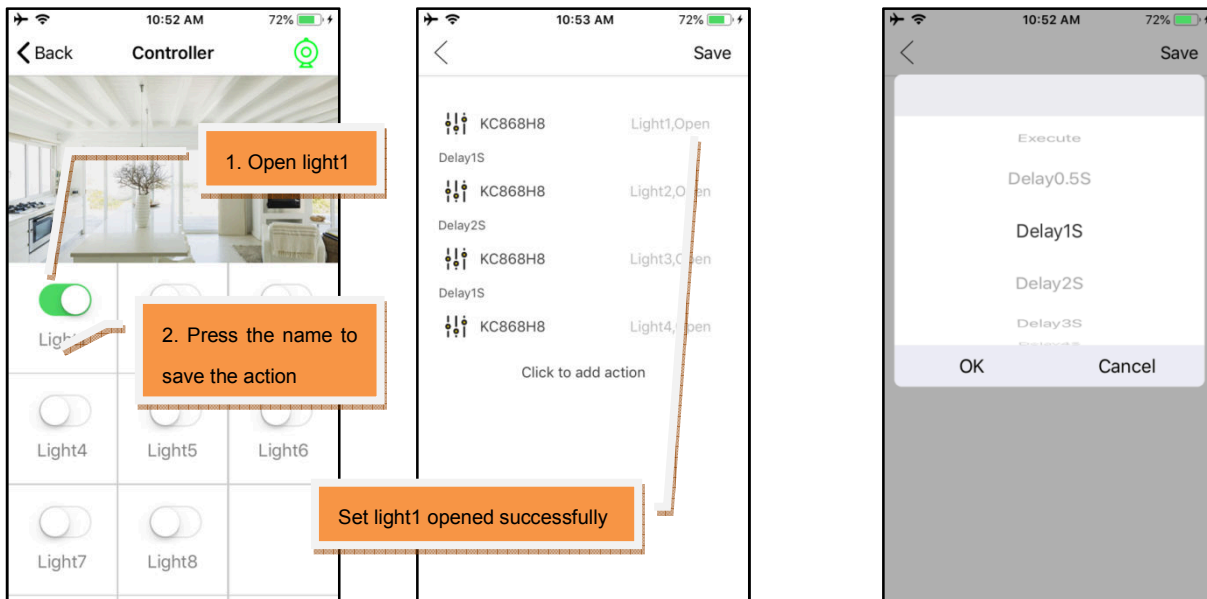
“Time setting” is for timing (optional), Pic1.5-3, Repeated time: Monday, Tuesday, Wednesday and 7:10 am.

Meaning the scene mode is opened at 7:10 am each Monday, Tuesday and Wednesday.

“Mode setting” is for adding the actions required to control

1. Press ‘Click to add action’, choose KC868H8
2. Press [Enter the ctrl pg],you can set the actions, see Pic4-7
  - a. Open light1
  - b. Press the name, it will save the action
3. Press Execute ,you can set Delay time
4. Press ‘Save’

See Pic1.5-5, Pic1.5-6, Pic1.5-7.



Pic1.5-5

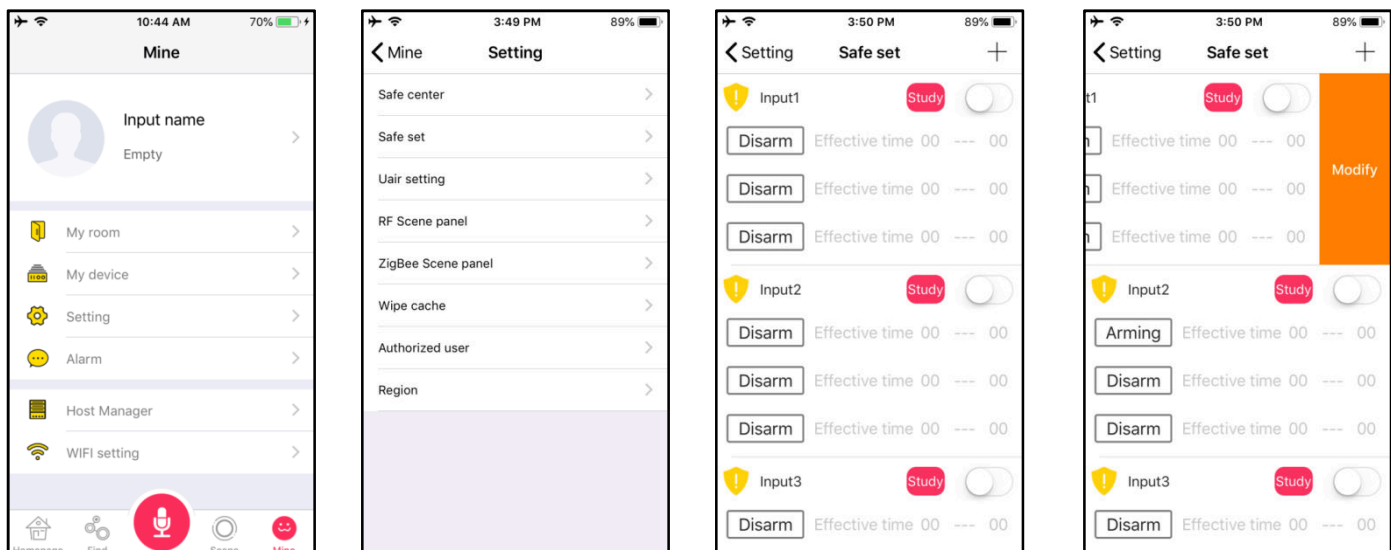
Pic1.5-6

Pic1.5-7

### 1.5.2 Inputting terminals trigger linkage of the scene mode

Click 【Mine】 ---- 【Setting】 -- 【Safe set】 ,Hold pressing 【input1】 to left,

The parameters can be modified.



【Device name】 : input one name

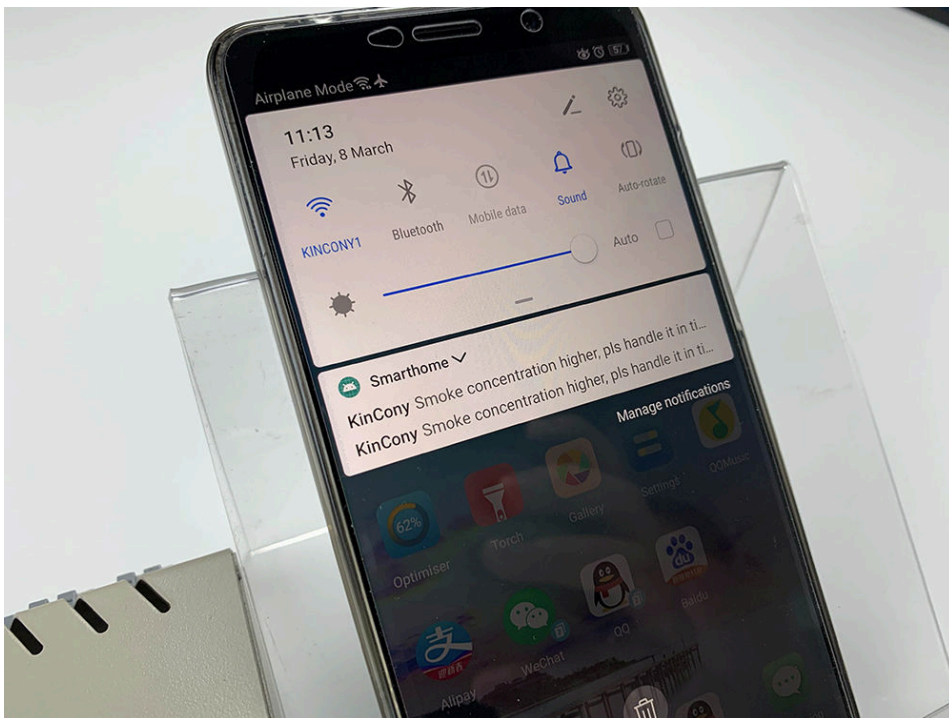
【Related scene】 click to choose one scene mode to linkage

【Alarm message】 Input message text sent to mobile(setting message allowed);

A screenshot of a mobile application interface for configuring a device. At the top, there is a status bar showing '3:50 PM' and '89%' battery. Below the status bar, there is a navigation bar with a back arrow on the left and a 'Save' button on the right. The main content area contains three sections: 'Device name' with the text 'Input1', 'Related scene:' with the text 'Select a trigger scene mode', and 'Alarm message' with a large text input area containing several horizontal lines for typing.

When inputting terminals are triggered, the phone will receive 【Alarm message】 ;

And the actions of the scene mode will be opened.



## 2. Computer Program controlling manual (WAN mode)

2.1 Power on the device and connect the internet cable

2.2 Double click "ActiveX Installer.exe" to install it.

(No need to install for future)

2.3 Double click "Net\_Relay\_Control.exe" to open it.

2.4 Setup the configuration as below steps

2.4.1: Choose 【Mode】 - 【WAN】

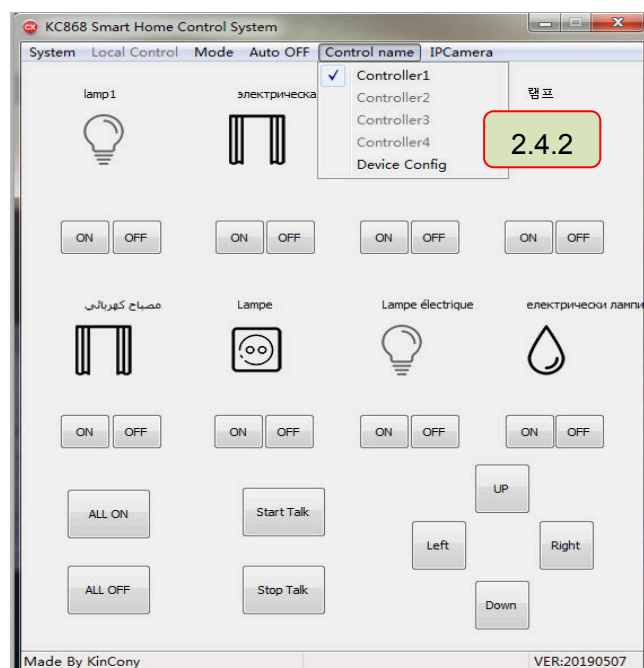
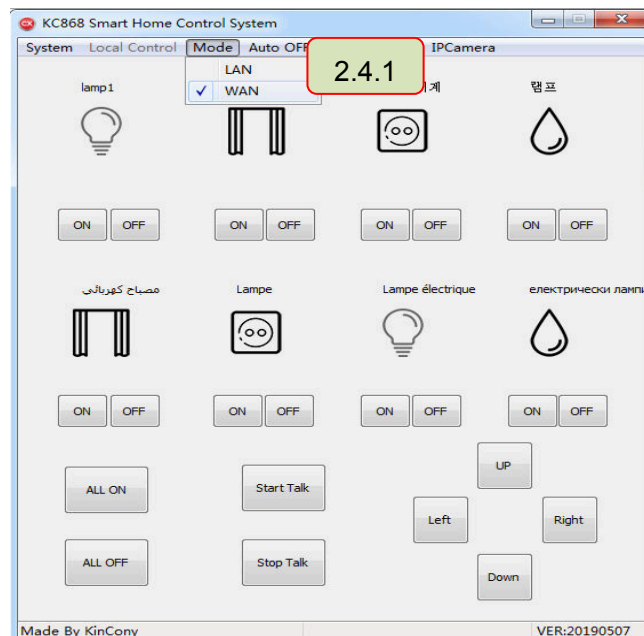
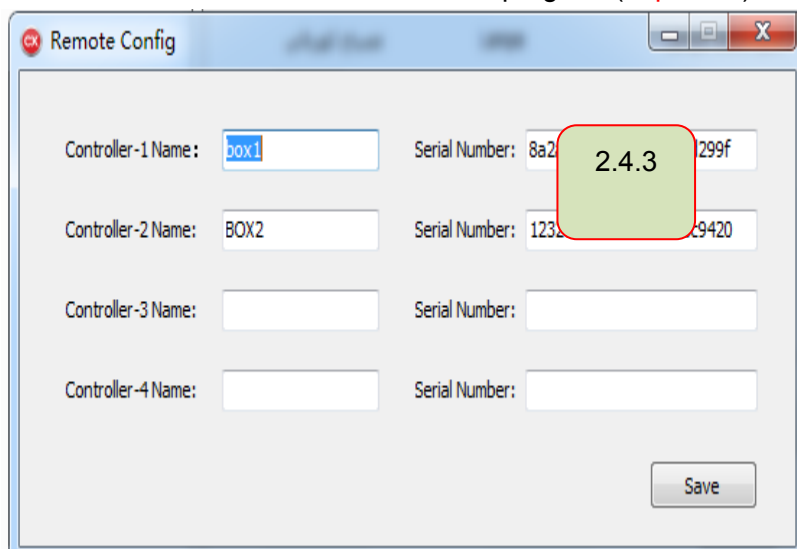
2.4.2: Click 【Control Name】 - 【Device Config】

2.4.3: Input Name and Serial Number(S/N)

(Serial Number is the 24 digitals on the QR code,  
Labeling on the device)

2.4.4: If more devices, Input name and S/N accordingly.  
Total four devices can be controlled.

2.4.5: Click 【Save】 and re-start the program.(Important)

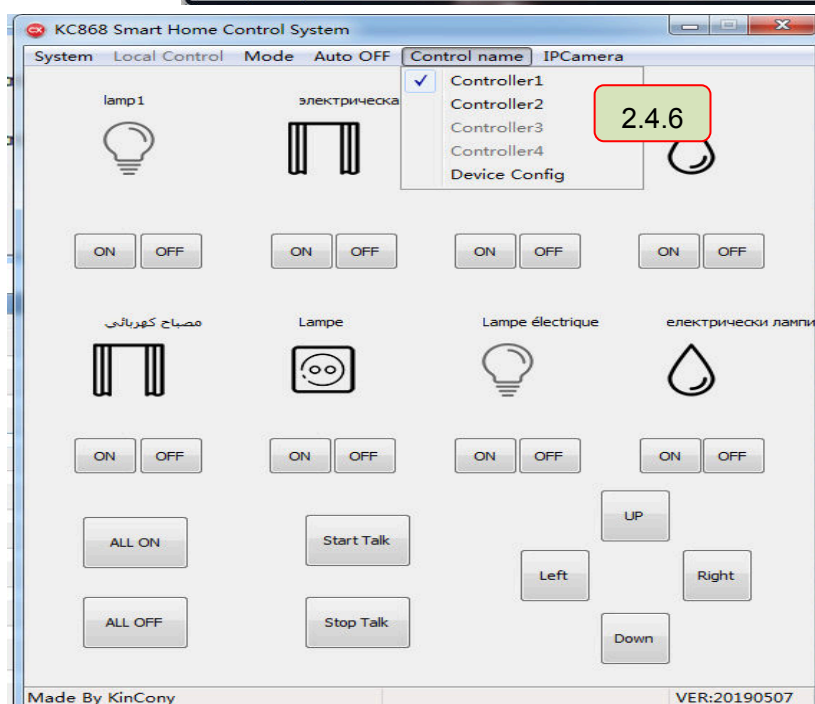


2.4.6: Choose Controller

2.4.7: Close the program and open it again.

2.4.8: Choose 【Mode】 - 【WAN】

2.4.9: Control the device



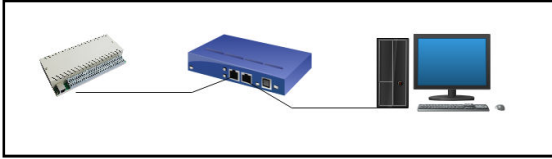


## IV. Local Controlling Operation (LAN mode)

### 1. Configuration Setting

#### 1.1 Power on the device and connect the internet cable

#### 1.2 Make sure your computer and the device are belonging to the same local internet



#### 1.3 Open the “Vircom Network Tool”

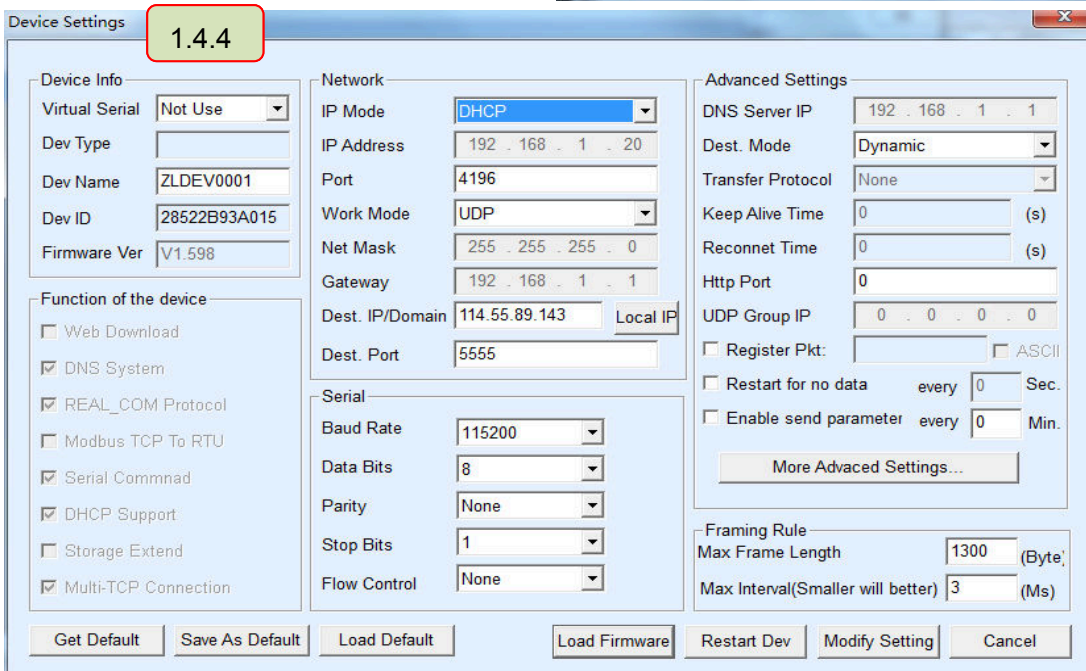
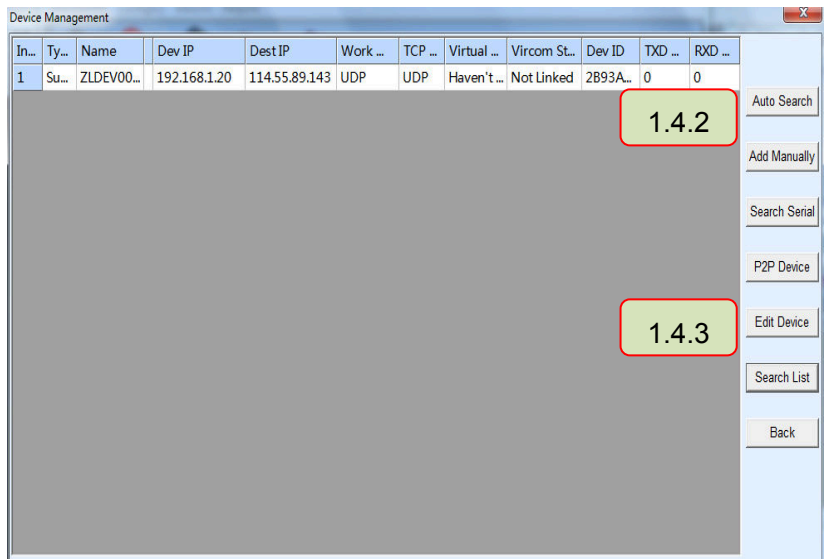
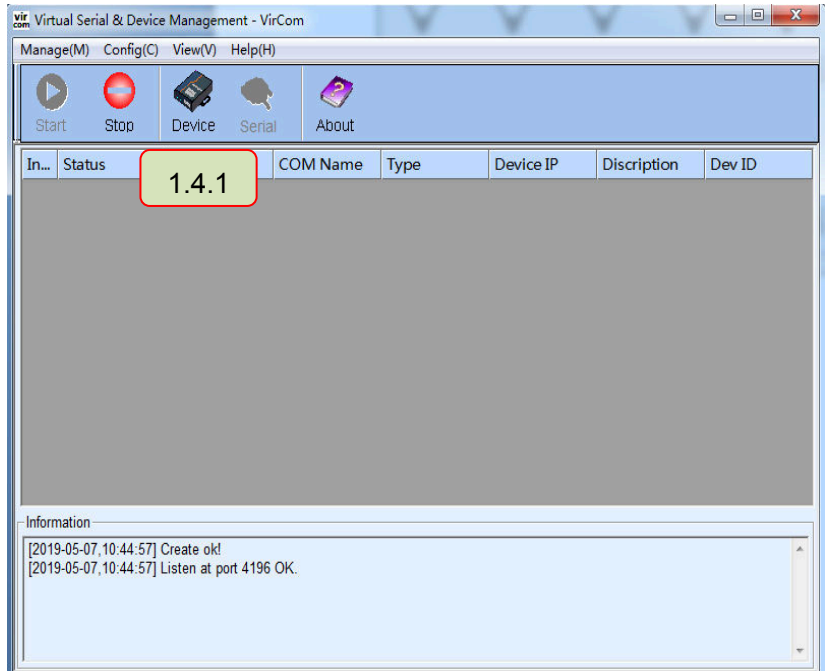
#### 1.4 Set the configuration of the device.

1.4.1 : Click 【Device】

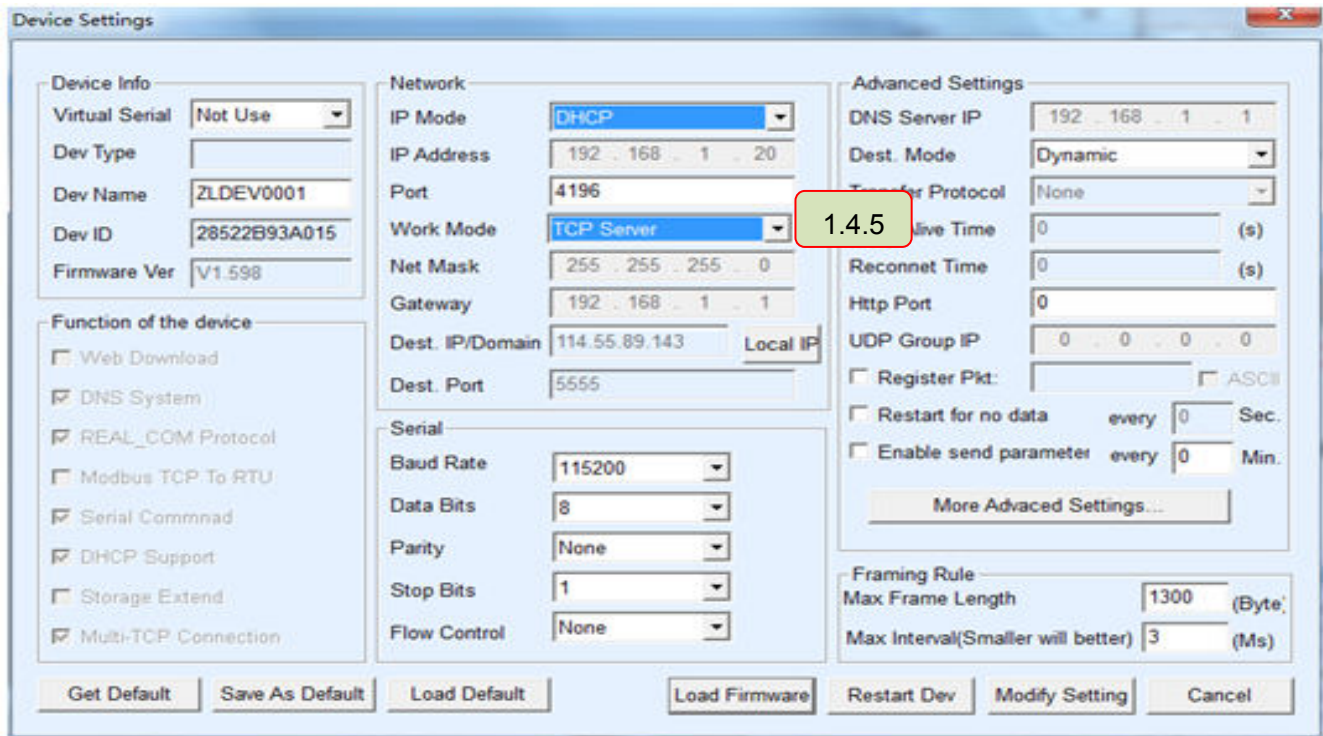
1.4.2: Click 【Auto Search】

1.4.3: Click 【Edit Device】

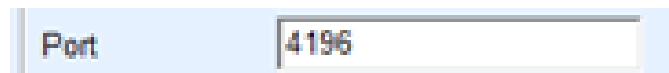
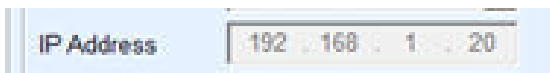
1.4.4: Enter into page  
【Device Settings】



1.4.5: Choose “TCP Server” for the 【Work Mode】, instead of “UDP”



1.4.6: Keep the others unchanging;  
Remember the IP Address and Port



1.4.7: Click 【Modify Setting】

1.4.8: Re-power the device and do the following part 2.

## 2. Computer Program Setting

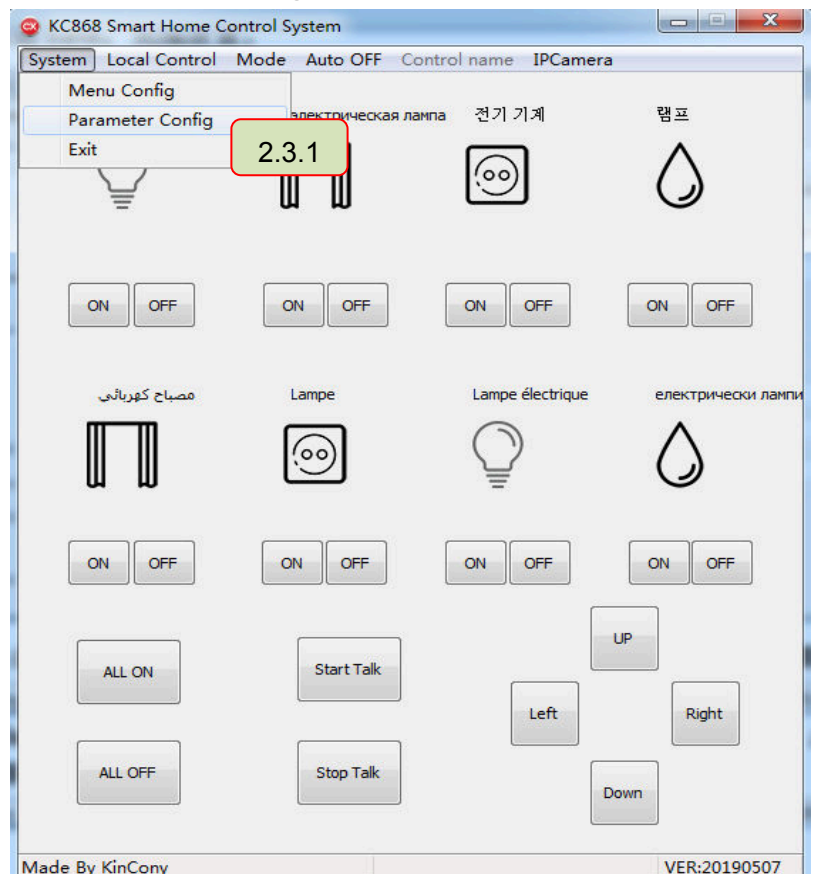
2.1 Double click “ActiveX Installer.exe” to install it for first time using.

(No need to install for future)

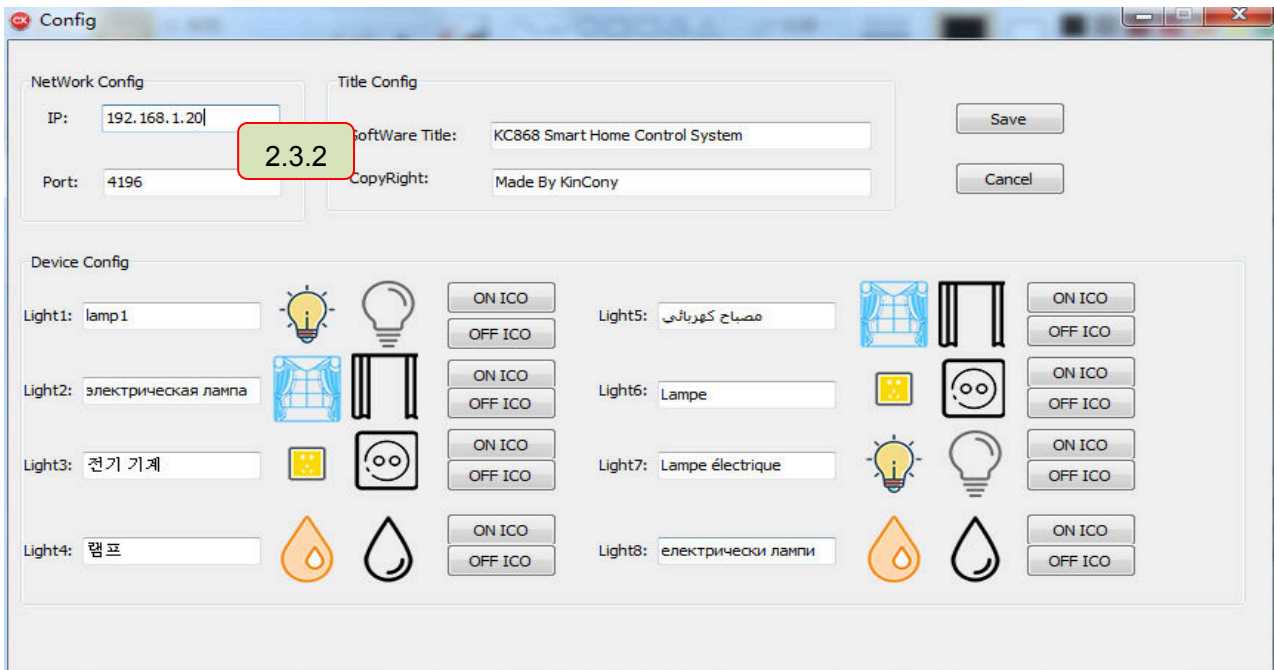
2.2 Open “Net\_Relay\_Control.exe”.

2.3 Setup the configuration as below steps

2.3.1: Choose 【System】-【Parameter Config】



2.3.2: Input the IP number and Port number. If not remembered, check back from the Vircom tool



2.3.3: Click 【Save】 and Re-start the program.

2.3.4: Click 【Local Control】 - 【LAN Connect】  
【Connect OK!】 showed at the bottom

2.3.5: Click 【Local Control】 - 【Initialization】  
【Initialization completion】 showed at the bottom

2.3.6: Control the device locally.

